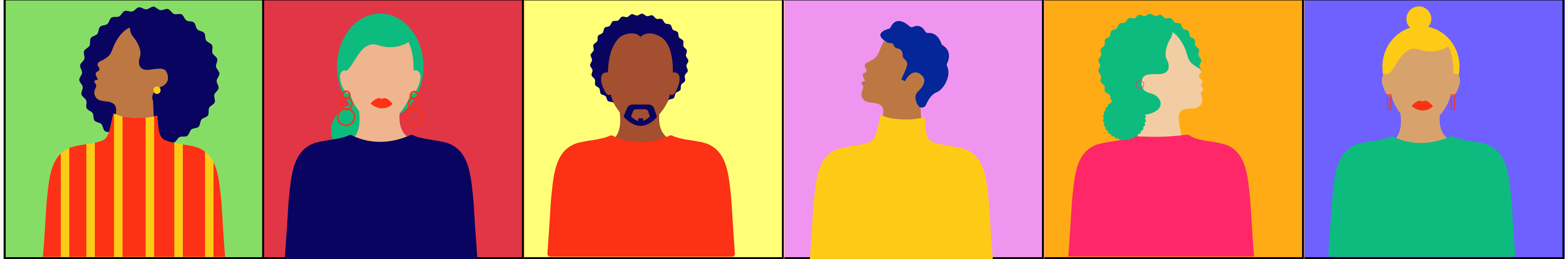
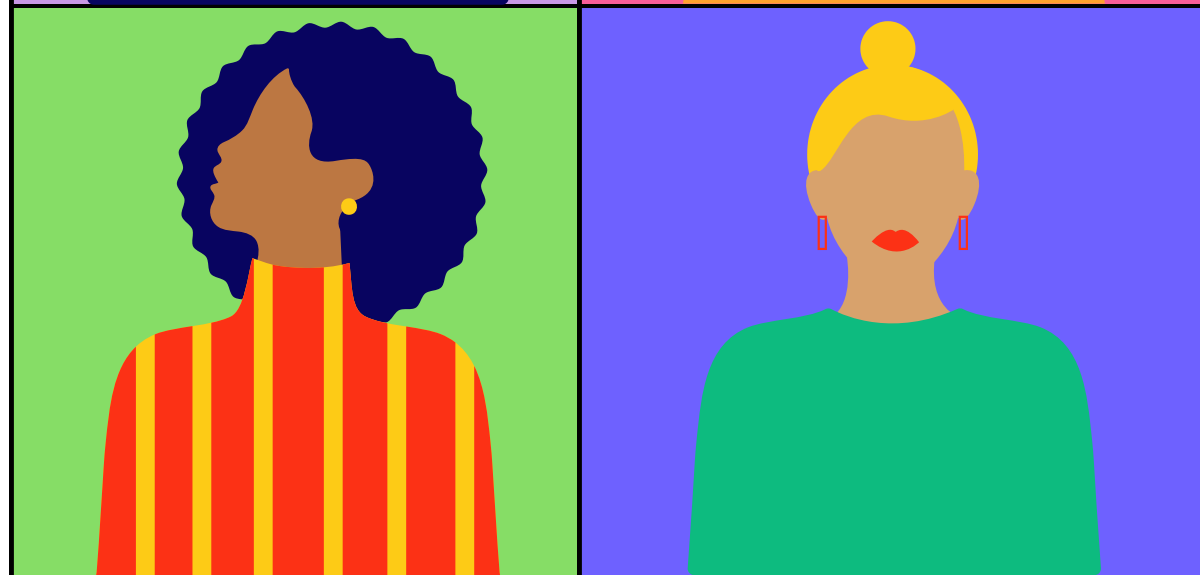
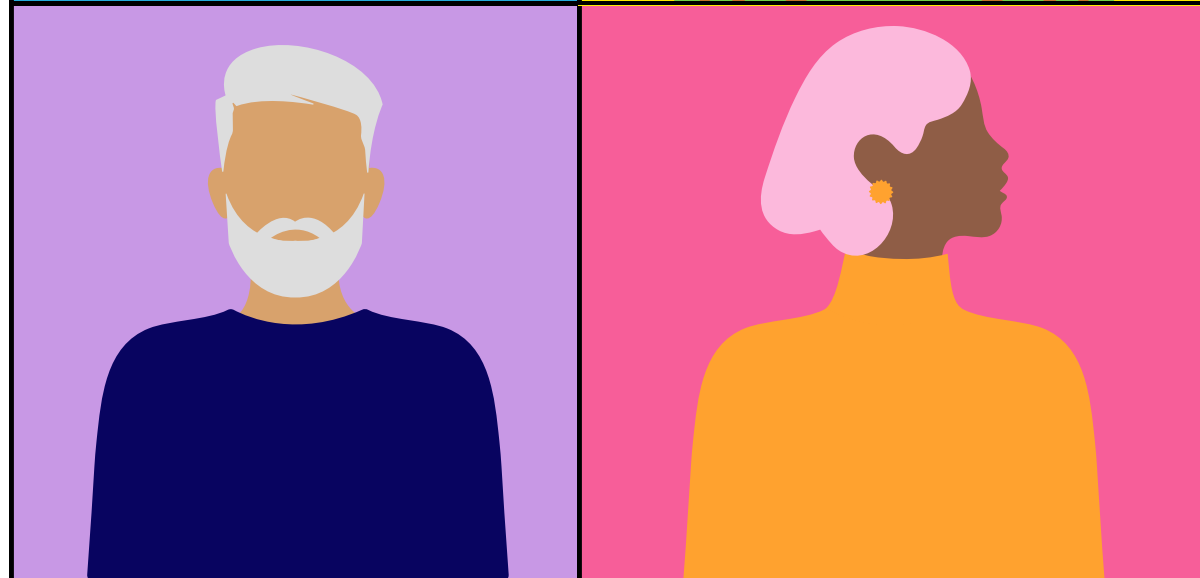




Presidents' Council  
District 28





# Presidents' Council?

*Who are we? What do we do? Why?*

a

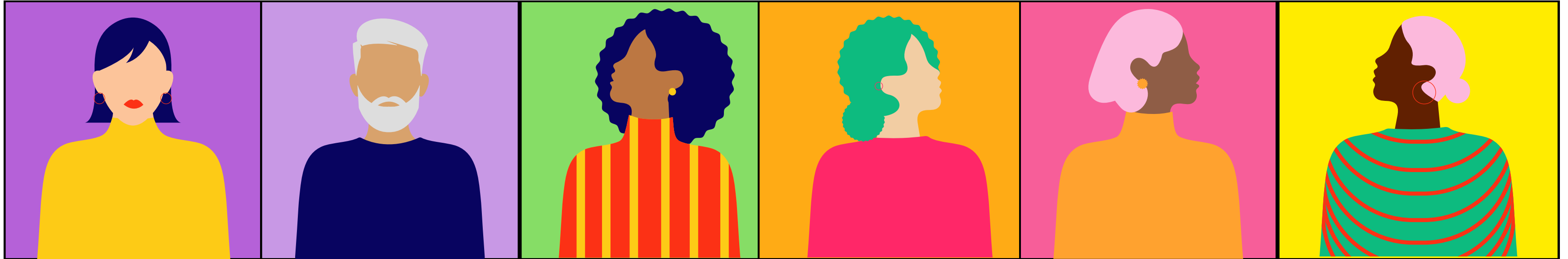
D28 Presidents' Council is a volunteer-based organization consisting of PA and PTA presidents from schools across our district

b

We represent the interests of parents and families

c

We provide guidance, information, and resources to support the efforts of our parent leaders



## Core Tenets

- Accessibility
- Community
- Equity

## Approach and Action

Formal meeting notices

+ Calendar invites

+ Reminder posted on social

Meetings are source of information

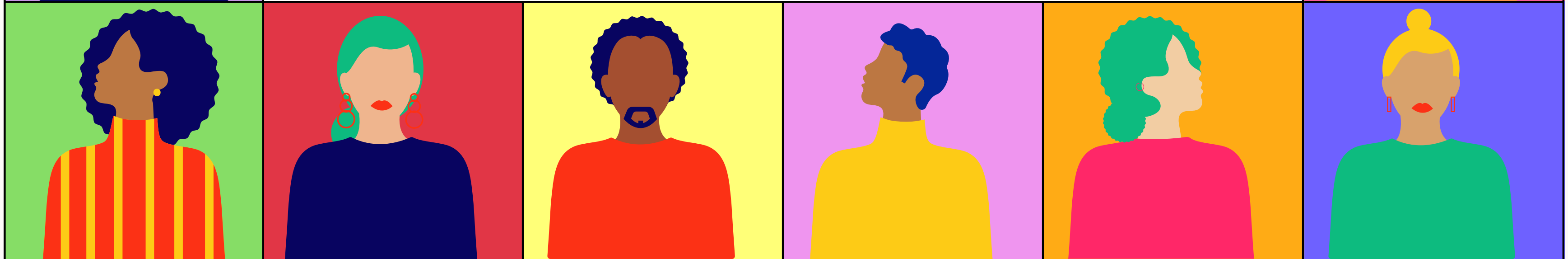
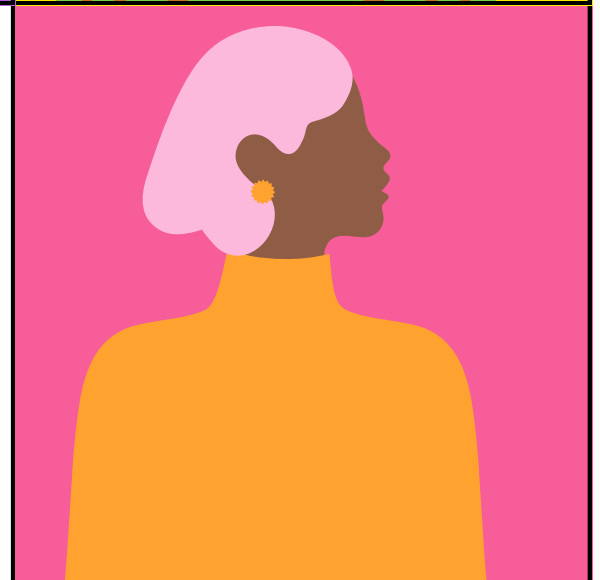
+ Dr. Pate is an active participant

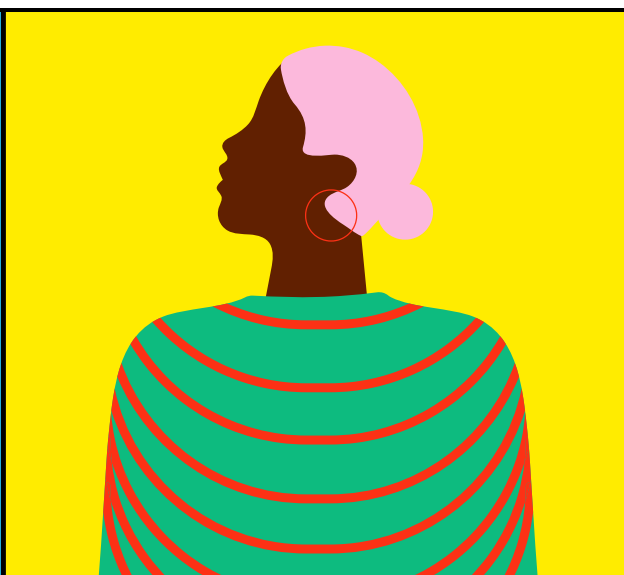
+ Interruption is encouraged and requested

+ A full recap is sent to all members



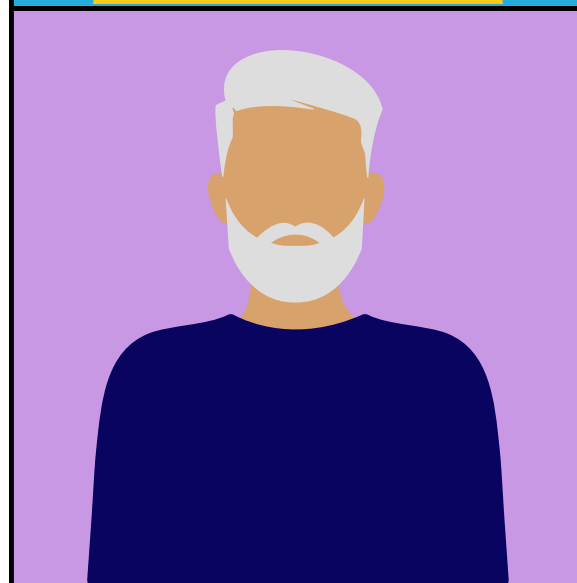
PA's and PTA's  
Making magic and making due





# Let's take a closer look

*How are we showing up?*



PS 121Q - Ana Zapata and Jacqueline Rowe



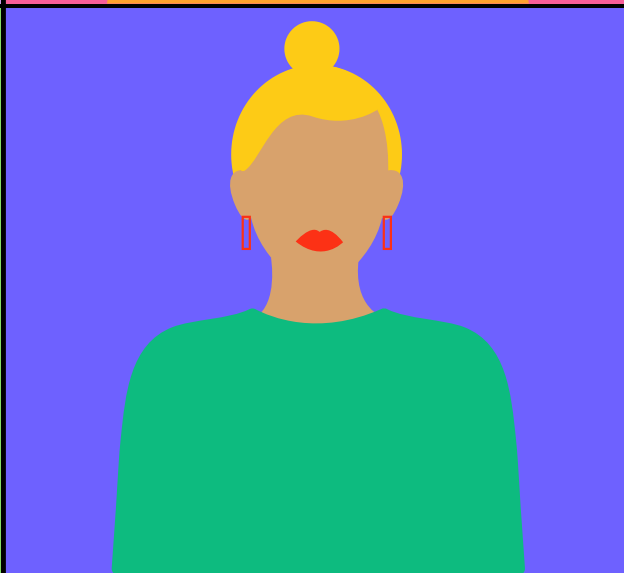
PS 144Q - Laura Weber and Kristen Prinzo



PS 303Q - Onome Atie-Egone and Susanna Lee



PS 349Q - Mosalita (Mona) McMillian



# PS 121Q Efforts

- 1st ever Fall Festival hosted in October
- Class Parents introduced to classrooms
- Teacher Wishlists introduced and supported
- "Paint with Me" program initiated
- Student-designed school spirit gear
- Word of the Week initiative introduced
- Zuzu Acrobat Assembly
- Multicultural Week
- Title 1 Family workshops

# and Results

- 97% of families feel that school staff works hard to build trusting relationships
- High participation rates at SLT and PTA meetings (SLT=20; PTA=45-55)
- Great communication between Admin, PTA, and parents and families



# PS 144Q Efforts

- Culture and Food Festival - 20 cultures and countries were represented
- Student Talent Show - 80 kids performed
- Fifth graders are working with an enrichment provider on a graduation performance

# and Results

- Monthly "Restaurant Night" fundraiser continues to be successful
- Fundraising initiative launching soon to help pay for enrichment programs next year



# PS 303Q Efforts

- PTA-sponsored field trips (in-school & off-site)
- Fundraisers center around community building
- Provided technology equipment
- Funded classroom resources based on wishlists
- Organized a canned food drive - all donations given to a local food bank
- Supported the Racial Equity Committee by funding trips for all grades

# and Results

- Supporting student learning is prioritized - e.g., funding for tech and curriculum
- Community is prioritized - e.g., December potluck was well attended; families took photos and participated in a raffle





# PS 349Q Efforts

- Consistent and varied fundraising events - e.g., Winter Craft Night, World's Chocolate sales, Bake Sale
- Upcoming online fundraiser with Square Art
- Nominating Committee for upcoming election is already in place

# and Results

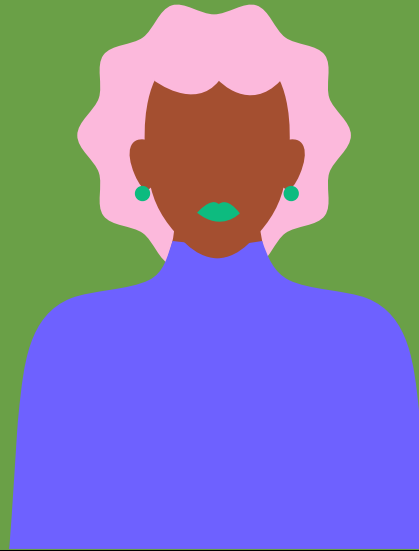
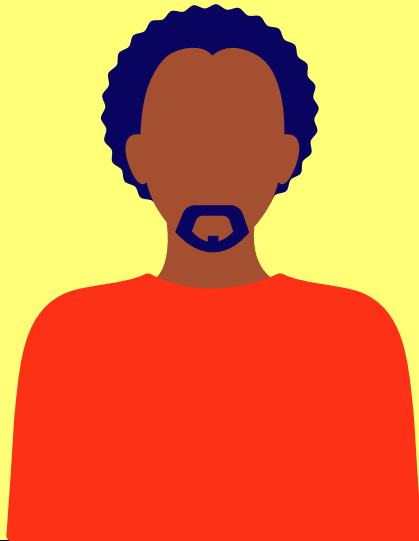
- To-date \$10,443 has been raised
- PTA celebrates parents by giving awards for donations, parent leadership, and volunteers
- PTA celebrates teachers and is hosting a teacher appreciation event in collaboration with Sunshine Corporations





# Our District, Our Problems

*Obstacles across our district*



**We may be unique but our problems are not**

- Filing for and being granted tax exemption
- Low rates of parent engagement
- Uncertainty and fluctuating morale





Get Involved  
If not you, who?

